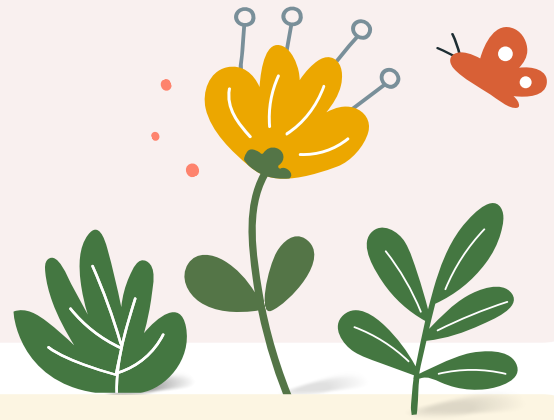


PEGASUS NEWSLETTER



REMINDERS:

PLEASE take the 5Essentials survey!

March 31- April 4: SPRING BREAK

April 29: 5:00pm-7:30pm Showcase Extravaganza

ELA

THE 4TH QUARTER IN PEGASUS ELA IS A CHANCE FOR US TO READ A NONFICTION TEXT. IN THE OMNIVORE'S DILEMMA, AUTHOR MICHAEL POLLAN EXPLORES A KEY ISSUE IN OUR MODERN FOOD SYSTEM: WHAT SHOULD WE EAT? HE EXPLAINS THAT WE, AS OMNIVORES, HAVE A WIDE VARIETY OF FOOD OPTIONS, BUT THAT VARIETY CREATES A DILEMMA. HOW DO WE KNOW WHICH FOOD CHOICES ARE BEST FOR OUR HEALTH, THE ENVIRONMENT, AND THE ECONOMY?

POLLAN BREAKS DOWN THE MODERN FOOD SYSTEM INTO FOUR MAIN FOOD CHAINS:

1. INDUSTRIAL FOOD: THIS IS THE TYPICAL, PROCESSED FOOD WE OFTEN BUY AT GROCERY STORES, MOSTLY MADE FROM CORN AND SOY.
2. PASTORAL FOOD: FOODS THAT COME FROM ORGANIC FARMS, WHERE ANIMALS ARE ALLOWED TO GRAZE AND CROPS ARE GROWN WITHOUT CHEMICALS.
3. HUNTER-GATHERER FOOD: A MORE PRIMAL APPROACH, WHERE WE FORAGE FOR WILD FOODS OR HUNT ANIMALS.
4. LOCAL FOOD: FOODS SOURCED FROM LOCAL, SUSTAINABLE FARMS OR SMALL-SCALE PRODUCERS.

POLLAN'S EXPLORATION HELPS READERS UNDERSTAND THE COMPLEXITIES OF FOOD PRODUCTION AND THE HIDDEN COSTS OF CHEAP FOOD. IT RAISES IMPORTANT QUESTIONS ABOUT HOW FOOD IS GROWN, WHO CONTROLS IT, AND HOW IT AFFECTS OUR HEALTH AND THE PLANET.

FOR PARENTS, THIS BOOK IS A CONVERSATION STARTER. IT CHALLENGES US TO THINK CRITICALLY ABOUT THE FOOD WE FEED OUR FAMILIES AND CONSIDER ITS ENVIRONMENTAL, ETHICAL, AND HEALTH IMPACTS. POLLAN ENCOURAGES READERS TO BECOME MORE INFORMED ABOUT FOOD CHOICES AND WHERE THEIR MEALS COME FROM. PLEASE LET ME KNOW IF YOU HAVE ANY QUESTIONS!

US HISTORY

STUDENTS WILL BE WORKING ON A WESTWARD EXPANSION TEAMING ACTIVITY. EACH TEAM IS GIVEN A TOPIC AND WILL CREATE A 20-30 GOOGLE SLIDE DECK WHICH THEY WILL PRESENT TO THE CLASS. THIS WILL TAKE UNTIL AFTER SPRING BREAK SO THE GRADE IS A SIGNIFICANT PORTION OF 4TH QUARTER. WE LOOK FORWARD TO THE PROJECTS THAT THE STUDENTS CREATE. PLEASE JOIN US ON APRIL 29 FROM 5:00-7:30 TO SEE YOUR STUDENT'S WORK AT THE TMS SHOWCASE EXTRAVAGANZA.

MATH

IN 8TH GRADE MATH, WE HAVE RECENTLY MOVED ONTO MODULE 5: FUNCTIONS. LAST WEEK, WE LEARNED HOW TO IDENTIFY FUNCTIONS IN TABLE AND GRAPH FORM. WE ARE NOW WRITING EQUATIONS TO REPRESENT REAL WORLD SITUATIONS AND SOLVING PROBLEMS USING THOSE EQUATIONS.

IN ALGEBRA, WE ARE LEARNING ABOUT EXPONENTIAL FUNCTIONS. WE ARE LEARNING HOW TO DESCRIBE DIFFERENT ASPECTS OF THEM, LIKE THEIR Y-INTERCEPTS, AND HOW TO WRITE EXPONENTIAL EQUATIONS FROM GRAPHS.

PLEASE REMEMBER TO REGULARLY CHECK YOUR LEARNER'S GRADES ON INFINITE CAMPUS. THEIR PERFORMANCE IN MATH IS ACCURATELY REFLECTED BY THEIR CURRENT GRADES. IF THEY DIDN'T DO WELL ON THE MOST RECENT SUMMATIVE ASSESSMENT, THEY HAVE THE OPPORTUNITY TO RETAKE IT WITHOUT ANY PENALTY. PLEASE CONTACT ME WITH ANY QUESTIONS, COMMENTS, OR CONCERNS.

SCIENCE

IN SCIENCE, THE SECOND SEMESTER FOCUSES ON EARTH SCIENCE, LIFE SCIENCE, AND HUMAN IMPACTS. WE COMPLETED OUR EARTH SCIENCE STANDARDS BY DETERMINING HOW EARTH HAS, AND IS, CHANGING. CURRENTLY, WE ARE FOCUSING ON HOW LIFE HAS CHANGED OVER TIME THROUGH EVOLUTION AND ADAPTATION. FOURTH QUARTER, WE WILL FOCUS ON HOW HUMANS IMPACT THE ENVIRONMENT. ALSO, WE ARE GETTING READY FOR THE ILLINOIS SCIENCE ASSESSMENT WHICH WILL BE TAKEN BY THE STUDENTS THE WEEK OF APRIL, 14TH.